

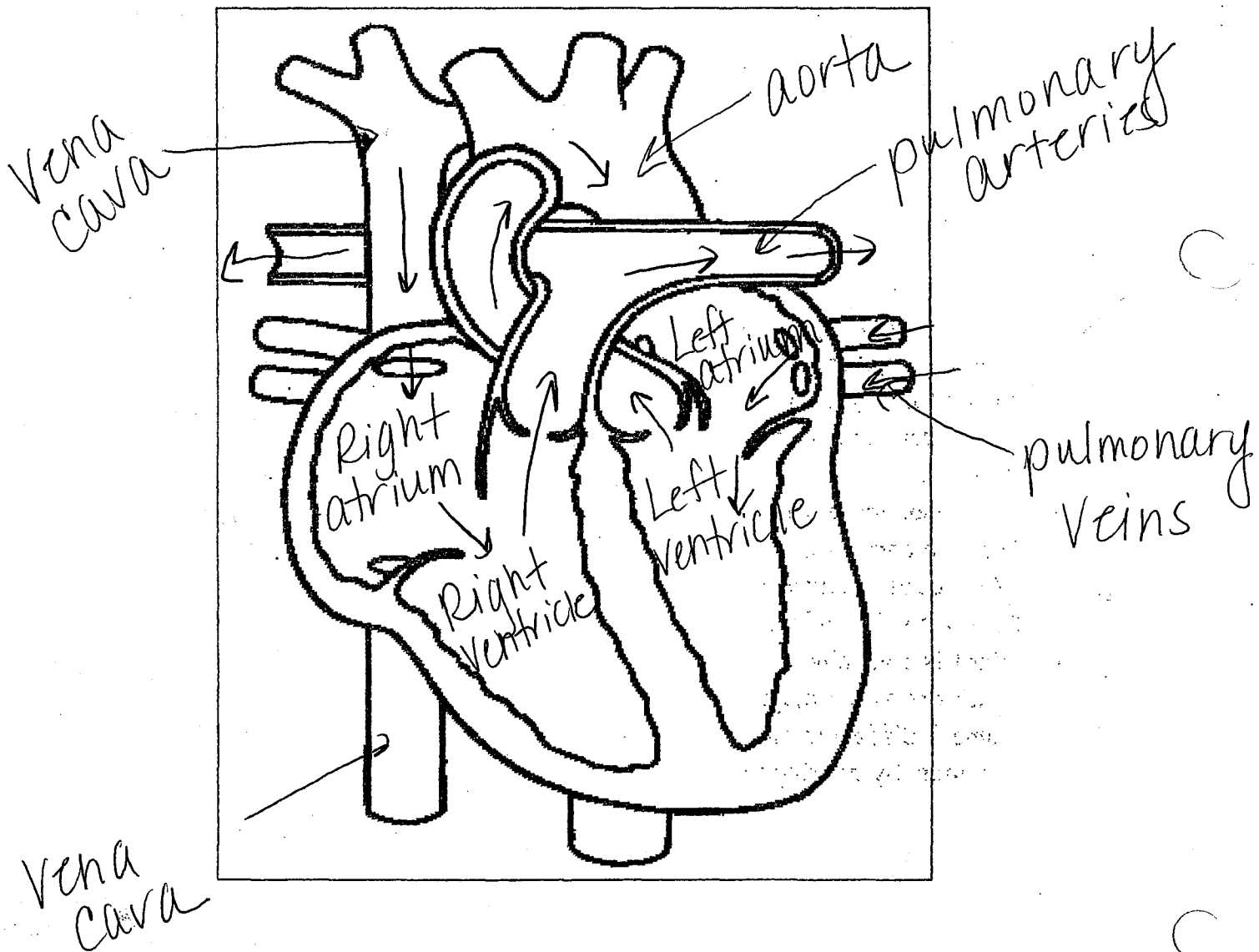
Name: Answer Key

Date: _____

The Heart

In the diagram of the heart below:

- Label the 4 chambers of the heart
- Label the different blood vessels: aorta, superior vena cava, inferior vena cava, pulmonary artery and pulmonary vein.
- Draw arrows showing the direction that blood flows through the heart (Hint: start with the vena cavae).



HUMAN CIRCULATORY SYSTEM

Name _____

Starting from and ending with the right atrium, trace the flow of blood through the heart and body by numbering the following in the correct order.

- | | | | |
|--------------|------------------|----------|-----------------|
| <u>1, 11</u> | right atrium | <u>4</u> | lungs |
| <u>6</u> | left atrium | <u>2</u> | right ventricle |
| <u>3</u> | pulmonary artery | <u>7</u> | left ventricle |
| <u>10</u> | vena cava | <u>9</u> | body cells |
| <u>8</u> | aorta | <u>5</u> | pulmonary veins |

Starting from and ending with the heart, trace the blood flow through the human circulatory system by numbering the following in the correct order.

- | | | | |
|-------------|------------|----------|-------------|
| <u>1, 7</u> | heart | <u>4</u> | capillaries |
| <u>6</u> | veins | <u>2</u> | arteries |
| <u>3</u> | arterioles | <u>5</u> | venules |

What term best fits each of the following descriptions?

- vessels which carry blood away from the heart
- vessels which carry blood toward the heart
- tiny blood vessels with walls that are only one cell thick
- thick wall that divides the heart into two sides
- upper chambers of the heart that receive blood
- lower chambers of the heart that pump blood out of the heart
- valve between right atrium and right ventricle
- valve between left atrium and left ventricle
- valves found between the ventricles and blood vessels
- membrane around the heart
- the only artery in the body rich in carbon dioxide
- the only vein in the body rich in oxygen

- Arteries
- Veins
- Capillaries
- Septum
- Atria
- Ventricles
- tricuspid
- mitral
- Semilunar
- pericardium
- pulmonary artery
- pulmonary vein