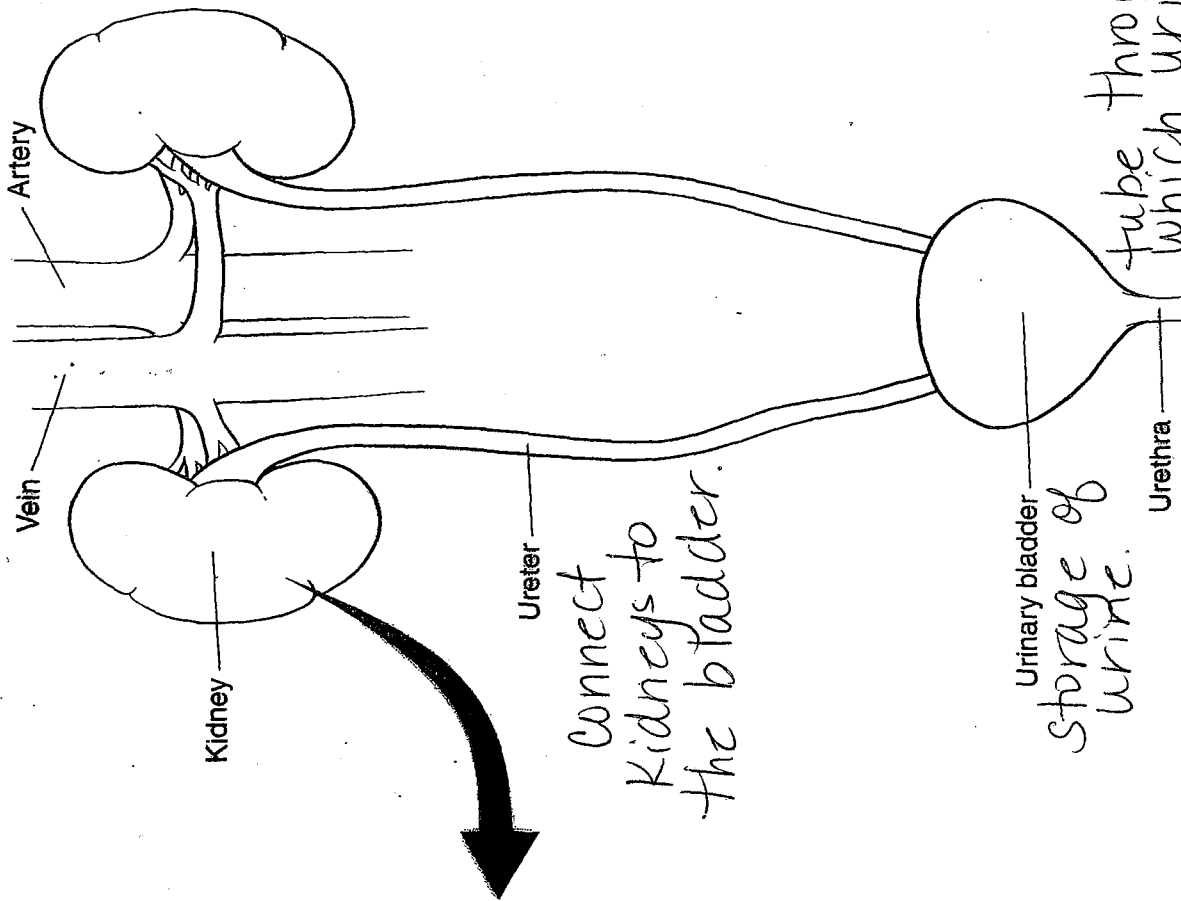
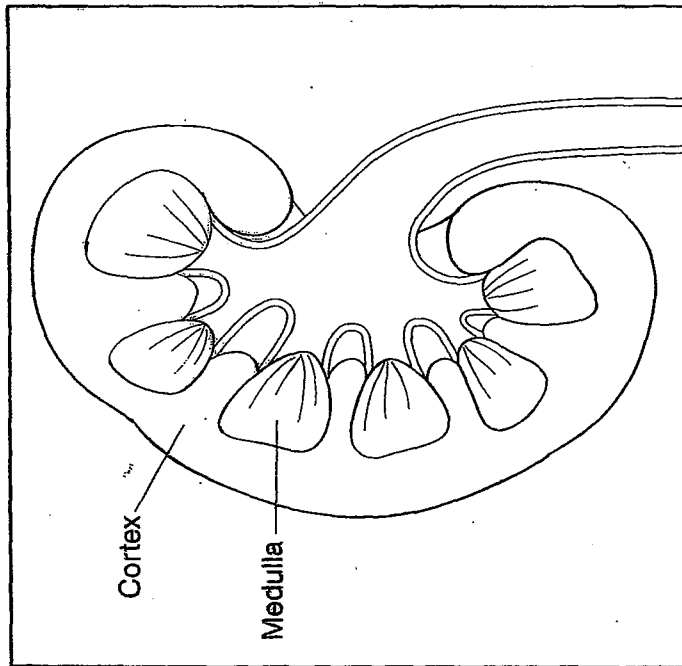


580 THE URINARY SYSTEM

Kidney (Cross Section)



As urine is excreted, muscle contractions of the urinary bladder will cause the urine to pass into the

- (1) ureter
- (2) glomerulus
- (3) urethra
- (4) Bowman's capsule

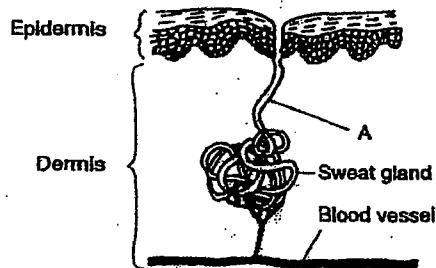
In humans, the immediate result of a blockage in one ureter would be to

- (1) limit the ability to store urine
- (2) prevent filtration of the blood
- (3) stop the release of urine from the body
- (4) decrease the amount of urine entering the bladder

The correct pathway for urine to flow out of the human body is

- (1) bladder → ureter → kidney → urethra
- (2) kidney → ureter → bladder → urethra
- (3) urethra → bladder → kidney → ureter
- (4) kidney → urethra → bladder → ureter

The diagram below illustrates some structures of the skin



A substance that blocks structure A would directly interfere with

- (1) cellular respiration
- (2) dehydration synthesis
- (3) storage of urea
- (4) temperature regulation

Constructed Response

Any disruptions in a body system may result in a corresponding imbalance in homeostasis. Using one or more complete statements name a disorder of the respiratory or excretory system and describe the imbalance caused by the disorder.

Kidney stones - result from a buildup of dissolved minerals on the inner lining of the kidney. May result in extreme pain as they leave the body.