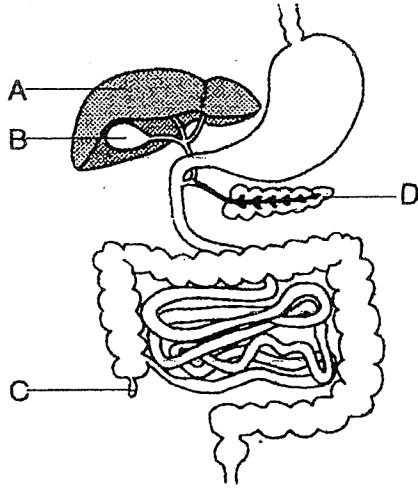
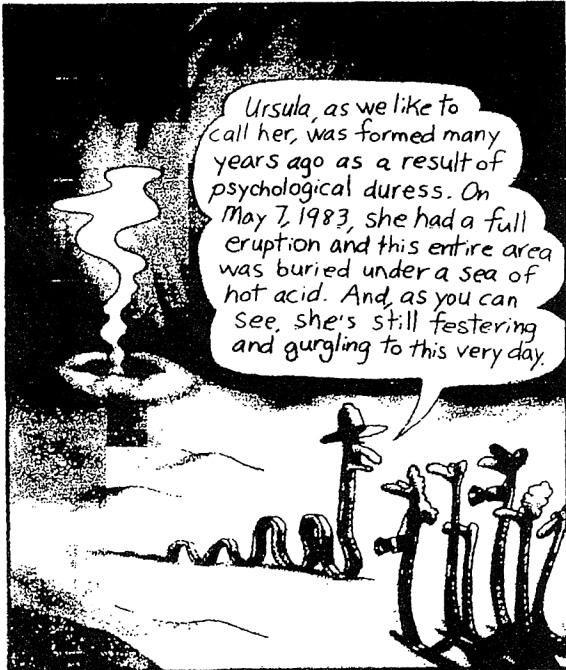


1. Which lettered structure in the diagram below may become blocked by feces, and possibly burst causing the spread of infectious materials throughout the body cavity?



- (1) A
- (2) B
- (3) C
- (4) D

2. Which disorder is most likely represented by the "festering" pit shown in the cartoon below?



Tapeworms visiting a stomach park

- (1) a gallstone
- (2) an ulcer
- (3) appendicitis
- (4) diarrhea

3. A disorder of the digestive system that can cause severe dehydration is known as

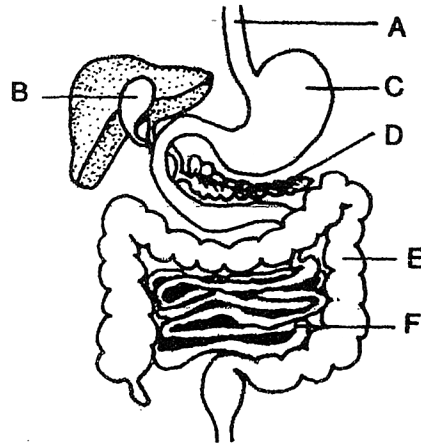
- (1) appendicitis
- (2) gallstones
- (3) constipation
- (4) diarrhea

4. Feces is usually about 40 percent water and 60 percent solid matter. Reducing the water content to 20 percent would most likely result in

- (1) ulcers
- (2) appendicitis
- (3) diarrhea
- (4) constipation

hard feces

Base your answers to the following questions on the diagram below which represents the human digestive system and on your knowledge of biology.




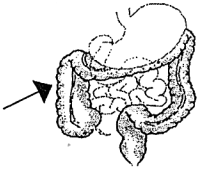
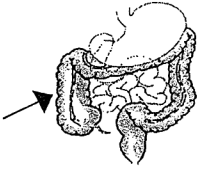
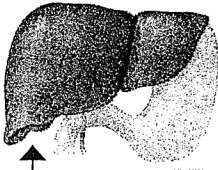

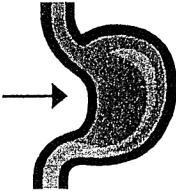
5. Heartburn and GERD are caused by a production of excess stomach acid that can reflux, causing a burning sensation and damage to the structure represented by letter

- (1) A
- (2) B
- (3) D
- (4) E

6. If small cholesterol particles enter an individual's bile duct, they may block the flow of bile to the upper part of the small intestine. This condition causes considerable pain and discomfort and can be treated by surgically removing structure

- (1) A
- (2) B
- (3) E
- (4) D

Digestive Disorders Summary Chart

Disorder and Structure Affected	Resulting Imbalance of Homeostasis	Possible Treatment
<p>Appendicitis</p> <p>- swelling & inflammation of the</p>  <p><u>APPENDIX</u></p>		<p>surgery</p>
<p>Constipation</p> <p>- too much water is absorbed by the</p>  <p><u>LARGE INTESTINE</u></p>		<p>drink water eat fiber exercise</p>
<p>Diarrhea</p> <p>- too little water is absorbed by the</p>  <p><u>LARGE INTESTINE</u></p>	<p>* dehydration</p>	<p>drink water</p>
<p>Gallstones</p> <p>- hardened materials in this storage pouch for bile</p>  <p><u>GALL BLADDER</u></p>		<p>surgery</p>
<p>Heartburn / GERD</p> <p>- acid refluxes (comes up) from the stomach and irritates the</p>  <p><u>ESOPHAGUS</u></p>		<p>over the counter meds.</p>
<p>Ulcers</p> <p>- painful sores in the lining of the</p>  <p><u>STOMACH</u></p>		<p>Acid Reducer meds.</p>